



OPEN WINDOW THEATRE

JOAN OF ARC

World Premiere Play
MAY 1 - 31, 2026

Written & Directed by
JEREMY STANBARY

OPENWINDOWTHEATRE.ORG

JOAN OF ARC

By JEREMY STANBARY

Production Team

Director, Artistic Dir. & Sound Designer

JEREMY STANBARY

Scenic Designer &
Master Carpenter

ROBIN MCINTYRE

Lighting Designer

SUE BERGER

Stage Manager

STEPHANIE MOGREN

Costume Designer

BRONSON TALCOTT

Lighting Assistant

JUSTIN RANUM

Assistant Stage Manager

ELLE ROW

Costume Associates

**NATE FARLEY &
JANET MCCOY**

Props Designer

NATE FARLEY

Dramaturg

ALLISON HENDRICKSON

Fight Director

MASON TYER

SPECIAL ACKNOWLEDGEMENTS

EXECUTIVE DIRECTOR: **Mark Dittman**

BOX OFFICE: **Thaxton Gamache**

OPEN WINDOW THEATRE ACKNOWLEDGES THE PROFESSIONAL
SUPPORT AND CONTRIBUTIONS OF THE FOLLOWING:

• *Kathy Angstman [Costume Assistance]* • *Benilde-St. Margaret's Drama Department* •
Vickie Burgett, One Step Productions [Discounted Equipment Rental] • *Frances & Kevin Butek &*
Family [Props Assistance] • *Luke Cahill [Set Assistance]* • *Chanhassen Dinner Theatres [Donated*
Lighting Instruments] • *Janet McCoy [Costume Assistance]* • *The Phipps Center for the Arts*
• *David Schneider, Northern Edge Armory* • *Doug Schmid [Props Assistance]*
• *University of Northwestern Music & Theater Department*

Visit our merchandise table at the Box Office at intermission or after the show!

Follow us for event updates & behind the scenes content!

  @OpenWindowTheatre  OpenWindowTheatre.org

"JOAN OF ARC"

CAST & PRODUCTION TEAM



Jeremy Stanbary
Director, Producing Artistic
Director, Sound Designer



Stephanie Mogren
Stage Manager



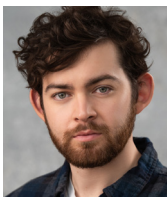
Elle Row
Assistant Stage Manager



Audrynn Hegewald
Jehanne d'Arc



Michael Quadrozzi
French Herald



Caleb Cabiness
English Herald/Pasquerel



Josh Zapata-Palmer
King Charles VII



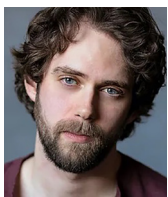
Ian Hardy
Georges de la Tremouille



Meg Bradley
Yolande of Aargon



Dawson Ehлке
Duke of Alençon



Jonah Smith
Bastard of Orleans



Rob Ward
La Hire "The Wrath"



Sam Sweere
Duke Of Bedford



Keith Prusak
Bishop Pierre Cauchon



Faith Winship Smith
Marie Anjou



Thaxton Gamache
Ensemble/Servants



Robin McIntyre
Scenic Designer
& Master Carpenter



Sue Berger
Lighting Designer



Bronson Talcott
Costume Designer



Nate Farley
Props Designer &
Costume Associate



Mason Tyler
Fight Director



CAST & CREW BIOS

Scan the QR code for cast & crew bios on the "Joan Of Arc" webpage.

ACT ONE

Scene I: Condemnation
Compiègne, France. May 23, 1430.

Scene II: Azincourt Gamble
15 Years Earlier. Azincourt: October, 1415

Scene II-b: A Herald's Life

Scene III: The Herrings Council
February 1429. Great Hall, Castle in Chinon

Scene IV: Charles and Marie
Great Hall, Castle in Chinon

Scene V: Debate Over the Girl
Great Hall, Castle in Chinon

Scene VI: The King's Chapel
Two Days Later: Early Morning

Scene VII: The Banquet
Later that Evening

Scene VIII: The Sign
Antechamber



ACT TWO

Scene I: A New Captain
Orléans, France

Scene II: War Letter
Blois, France

Scene III: Confidential Diplomacy
Duke of Bedford's Quarters

Scene IV: Arrival at Orléans
Outside the Gates

Scene IV-b: Heralds / The War Council

Scene V: Early Skirmish
Joan's Quarters in Orléans

Scene VI: Fortress of the Augustins
Orléans

Scene VI-b: Victory in Orléans

Scene VII: From Bedford to Chinon
Duke of Bedford's Quarters / Castle in Chinon

Scene VIII: The Loire Valley Campaign
Jargeau / Beaugency / Patay

Scene IX: The Coronation
Cathedral in Reims

Scene X: The Undermining
Bishop Cauchon's Residence / Castle in Chinon

Scene X-b: Defeat in Paris
Battlefield Infirmary, Outside Paris

Scene XI: Paris Fallout
Castle in Chinon

Scene XII: The Visit & The Captains' Plot
Compiègne / Chinon

Scene XIII: The Trial
Rouen

Scene XIV: The Flames
Vieux-Marché Square, Rouen



Join Missed The Boat Theatre for the
world premiere of *Moonshot!*

Tickets available now:
missedtheboattheatre.com

THANK YOU, SEASON SPONSORS!

Interested in becoming a season sponsor? Contact us: freshair@openwindowtheatre.org//612-615-1515



Providing experienced, aggressive, and responsive legal services to businesses nationwide.



Your most trusted advisor to handle your individual and small business tax needs.



Our degree programs explore the impact of the Incarnation on thought and culture.



KEY COMMUNITY
BANK

Key Community Bank of Inver Grove Heights – Supporting our local community for over 25 years.

THANK YOU, SEASON SPONSORS!

Interested in becoming a season sponsor? Contact us: freshair@openwindowtheatre.org//612-615-1515



Serving Catholic individuals, families, schools, and organizations. Join us for good.



In loving memory of Christiane Marie Skidmore

Strengthening missions that nurture life, families and faith-filled communities.



BOWEN DESIGN

ESTABLISHED ★ 1995

Your friendly neighborhood graphic design studio.

Get your Open Window Theatre Merch!



Visit our merchandise table up front during intermission or after the show to get your Open Window Theatre merchandise.

SEASON 13 // 2026 - 2027

October 2 - 25



DOCTOR FAUSTUS

Christopher Marlowe's Classic Elizabethan Tragedy

THE

November 28 - January 3



LION THE WITCH AND THE WARDROBE

Adapted By JOSEPH ROBINETTE From the Book By C.S. LEWIS



Play By
ROBERT BOLT

February 19 - March 21



A MAN FOR ALL SEASONS

April 30 - May 30



THE MIRACLE WORKER

Play By
WILLIAM GIBSON



Experience the Joy
of being a

COR Patron

Season Tickets // Free Swag // VIP Offers & Events

Scan the QR Code to Learn More
or Ask a Box Office Associate for Details

