

DECEMBER 6 - 30, 2024



A CHRISTMAS CAROL

New Adaptation with Music by

EMILY C.A. SNYDER

Directed by

JOSHUA ZAPATA-PALMER

OPENWINDOWTHEATRE.ORG

A CHRISTMAS CAROL

Play Adapted by

EMILY C. A. SNYDER

Artistic Director/Sound Designer

JEREMY STANBARY

Director

JOSHUA ZAPATA-PALMER

Stage Manager

KENDRA KISPERT

Scenic Designer/Lead Scenic Artist

ROBIN MCINTYRE

Costume Designer

ROBERT GRAFF

Lighting Designer

SUE BERGER

Props Designer/Asst. Scenic Artist

NATE FARLEY

Music Director

DYLAN SAUDER

Live Music

KURT LARSON

SPECIAL ACKNOWLEDGEMENTS

MANAGING DIRECTOR: **Mark Dittman**

BOX OFFICE: **Jill Mraz**

WEBSITE & BOX OFFICE IT: **Jeromy Darling**

MANY THANKS TO THE FOLLOWING INDIVIDUALS AND ORGANIZATIONS:

Benilde St. Margaret High School Theatre, Lakeville High School Theatre, University of Northwestern Department of Music & Theater, Quinn Berger (lighting assistant), Noah Solfest (lighting assistant), Cindy Forsgren (costume assistance), Jessica Kelm (costume assistance), A. Emily Heaney, Norcostco

CHRISTMAS DISPLAYS: **Nate Farley (committee member), Molly Koop (committee member), Lori Walsh; Marybeth Schmid; Tiffany Brooks; Amanda Quinn; Kevin, Rachael, Gianna, and Frances Butek (committee member)**

MUSIC ACKNOWLEDGEMENT: **Pre/Post-Show & Intermission music:**

**Victorian Christmas: A Traditional Victorian Instrumental Holiday Celebration
Album by Craig Duncan (2004)**



Get your Season 11 Merchandise!

Visit our merchandise table up front during intermission or after the show to get your "A Christmas Carol" mug or Season 11 mug set.

"A CHRISTMAS CAROL"

CAST & PRODUCTION TEAM



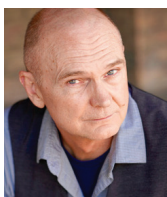
Josh Zapata-Palmer
Director



Kendra Kispert
Stage Manager



Dylan Sauder
Music Direction



Pete Colburn
Ebenezer Scrooge



Noah Ratgen
Young Scrooge/Fred/Future



Peter Aitchison
Marley/Present/Fezziwig



Jillian Ehlke
Belle/Maggie/Clara



Justus Heisler
Tiny Tim



Kasmira Heisler
Christmas Past/Beggar'



Jacob Koshiol
Bob Cratchit



Sarah Stanbary
Emily Cratchit



Meg Bradley
Mrs. Fezziwig/Charity/Bess



Audryn Hegewald
Belinda Cratchit/Fanny



Augustine Stanbary
Master Wesssex



Thaddeus Heisler
Youngest Fezziwig



Carter Monahan
Youngest Scrooge



Sue Berger
Lighting Designer



Nate Farley
Props Designer



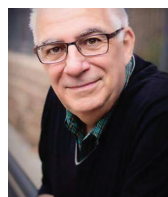
Jeremy Stanbary
Artistic Director/
Sound Designer



Robin McIntyre
Set Designer/
Scenic Artist



Kurt Larson
Live Music



Robert Graff
Costume Designer



CAST & CREW BIOS

Scan the QR code for cast & crew bios and a full list of characters each actor plays.

To see the full list of characters, visit our *A Christmas Carol* bios webpage (see QR code).

DIRECTOR'S NOTE

Every Christmas season, we return to stories that remind us of who we are and who we aspire to be. Among them, A Christmas Carol stands out—not just for its unforgettable characters and imagery, but for its power to challenge and inspire us anew with each retelling. At its heart, this tale is about redemption, faith, and the healing power of time. It reminds us that no matter what we've done in the past, transformation is always within reach.

When I first encountered A Christmas Carol as a child, I was captivated by its mix of humor, music, and timeless lessons (thanks to The Muppet Christmas Carol). That wonder has only deepened with age, especially as I've had the privilege to perform in it twice and now direct it for the first time. This adaptation by Emily Snyder captures the story's rich themes while integrating traditional carols in a way that feels organic and deeply moving. It invites us to imagine how Charles Dickens himself might have crafted this tale as a theatrical experience—intimate, reflective, and bursting with the spirit of Christmas.

By highlighting the healing power of time and memory, we see transparently how reflection on our past, present, and future can heal and transform us. The organic nature of the traditional carols within this production underscores the story's spiritual journey, reminding us that music can both mourn and celebrate, bringing light to the darkest of times.

My hope is that you experience the wonderful feeling of nostalgia associated with Dickens, and that you leave this theater inspired to look inward and outward—to reflect on your own "Christmas Past," embrace the joy of your "Christmas Present," and consider how your choices will shape your "Christmas Yet-To-Come." May this story rekindle a sense of faith, generosity, and joy in your hearts this Christmas season. Let us choose light, even in the midst of darkness.

- Joshua Zapata-Palmer, Director

HOLY CROSS CATHOLIC CHURCH
AS THE WORLD SPINS, THE CROSS STANDS FIRM.
Embodying the 'Way of Beauty' in the Heart of the NE Minneapolis Arts District

REVERENT LITURGY
COMMUNITY ON MISSION

NE CATHOLIC UNDERGROUND
ADORATION & ARTS EVENINGS
WWW.OURHOLYCROSS.ORG

SACRED MUSIC
THEATRE, ARTS & CONCERTS

THANK YOU, SEASON SPONSORS!

Interested in becoming a season sponsor? Contact us: freshair@openwindowtheatre.org//612-615-1515



Providing experienced, aggressive, and responsive legal services to businesses nationwide.



Your most trusted advisor to handle your individual and small business tax needs.



Our degree programs explore the impact of the Incarnation on thought and culture.



KEY COMMUNITY
BANK

Key Community Bank of Inver Grove Heights – Supporting our local community for over 25 years.

THANK YOU, SEASON SPONSORS!

Interested in becoming a season sponsor? Contact us: freshair@openwindowtheatre.org//612-615-1515



*Christiane's
legacy of love*



In loving memory of Christiane Marie Skidmore

Strengthening missions that nurture life, families and faith-filled communities.



BOWEN DESIGN

ESTABLISHED ★ 1995

Your friendly neighborhood graphic design studio.



We are creating thriving, apostolic parishes and more.



We are a full service General Contractor for all of your home improvement needs!

THANK YOU, SEASON SPONSORS!

Interested in becoming a season sponsor? Contact us: freshair@openwindowtheatre.org//612-615-1515



ALLIANCE BANK

Meeting your consumer & commercial financial needs in the Twin Cities.

JMJ Painters



Commercial and Residential Painters.
Your Home. Your Business. Your Family.



PACEM IN TERRIS

HERMITAGE RETREAT CENTER

Pacem in Terris provides an environment where people come and be alone with God in silence.

Catholic United Financial CREDIT UNION

Serving Catholic individuals, families, schools, and organizations. Join us for good.

Experience the Joy
of being a

COR Patron

Season Tickets // Free Swag // VIP Offers & Events

Scan the QR Code to Learn More
or Ask a Box Office Associate for Details

